
Datum: 07.07.2021
Auskunft erteilt: Frau Rinn
Unsere Zeichen: 65.2.1 KR/JB
Telefon: 0641 306-1428

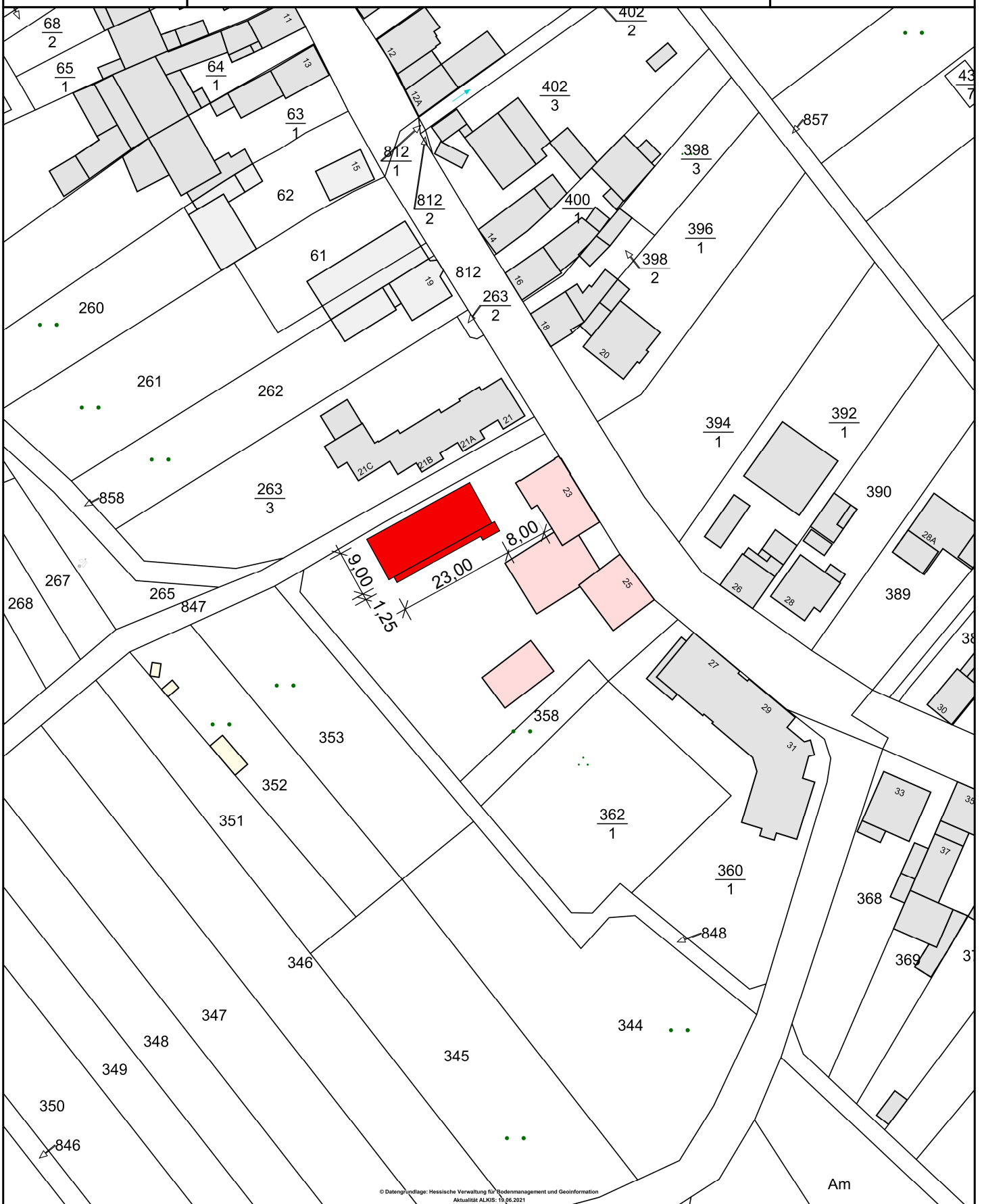
Anlage 2 Entwurfsdarstellung

**Neubau Holzmodulbau für Klassenräume
Kleebachschule, Hüttenbergstr. 23, 35398 Gießen-Allendorf**



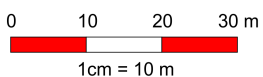
Im Auftrag

Jutta Müller
Amtsleiterin



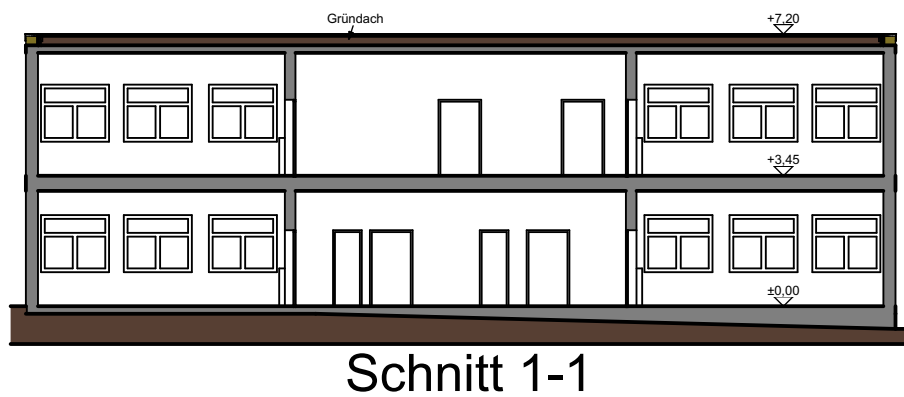
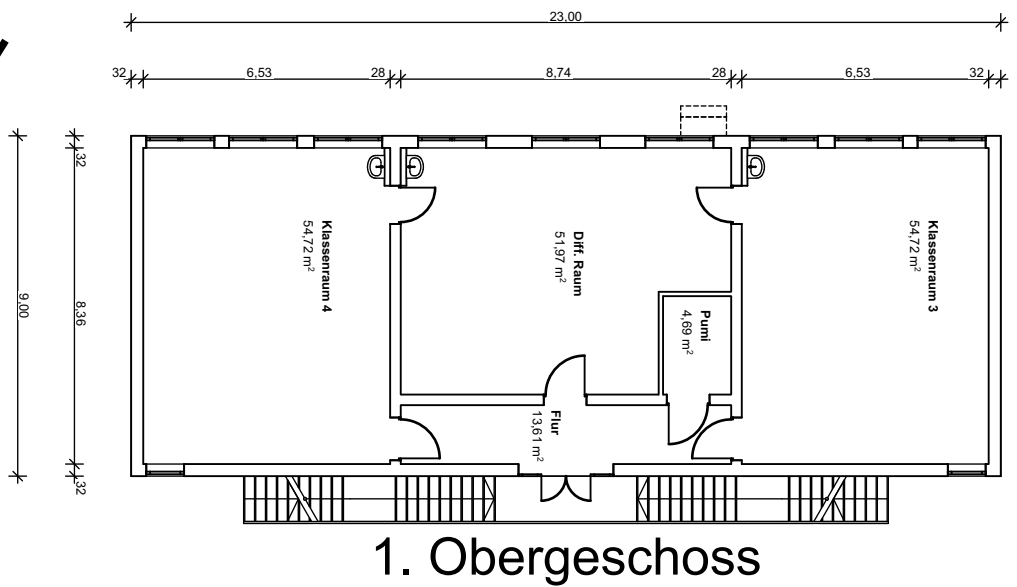
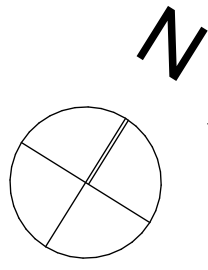
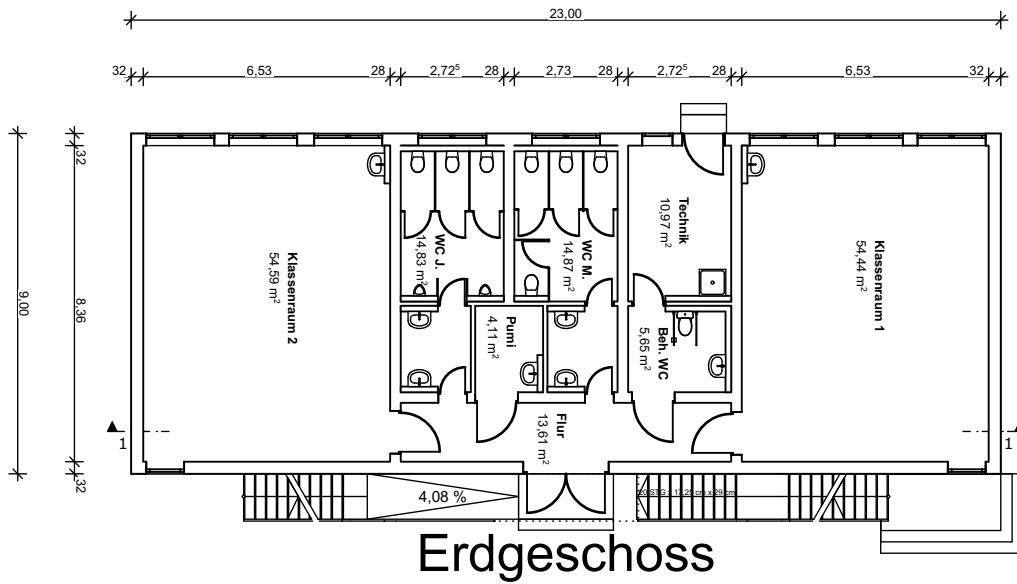
© Datengrundlage: Hessische Verwaltung für Bodenmanagement und Geoinformation
Aktualität ALKIS: 19.06.2021

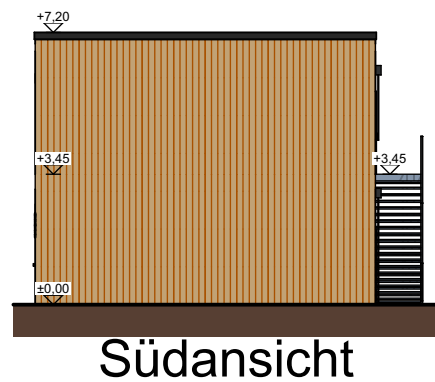
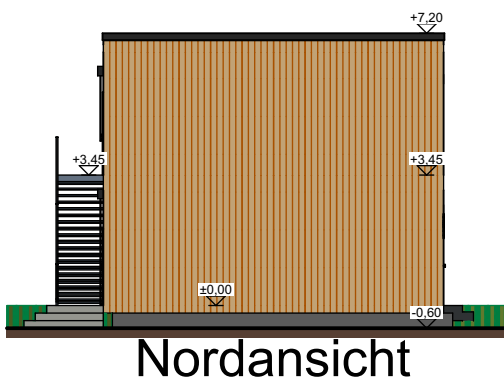
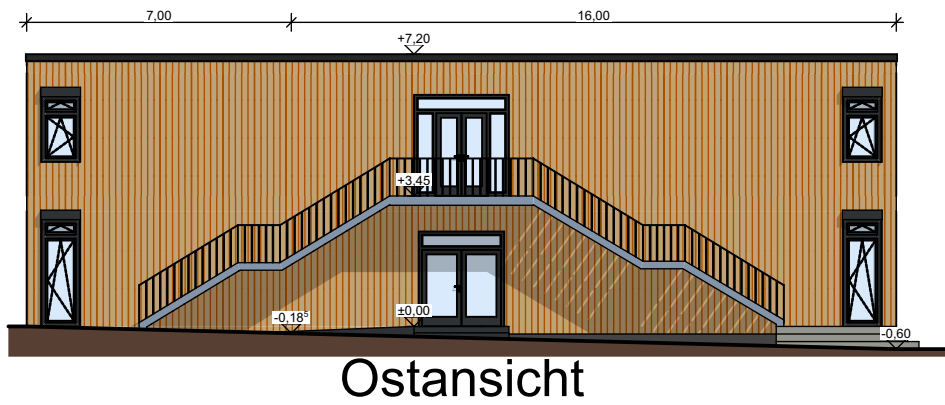
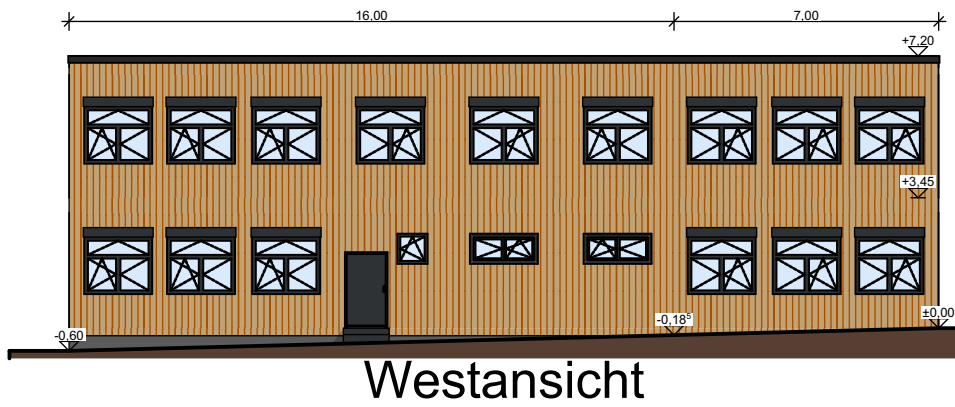
Maßstab 1 : 1.000



+++ Nur für den Dienstgebrauch +++



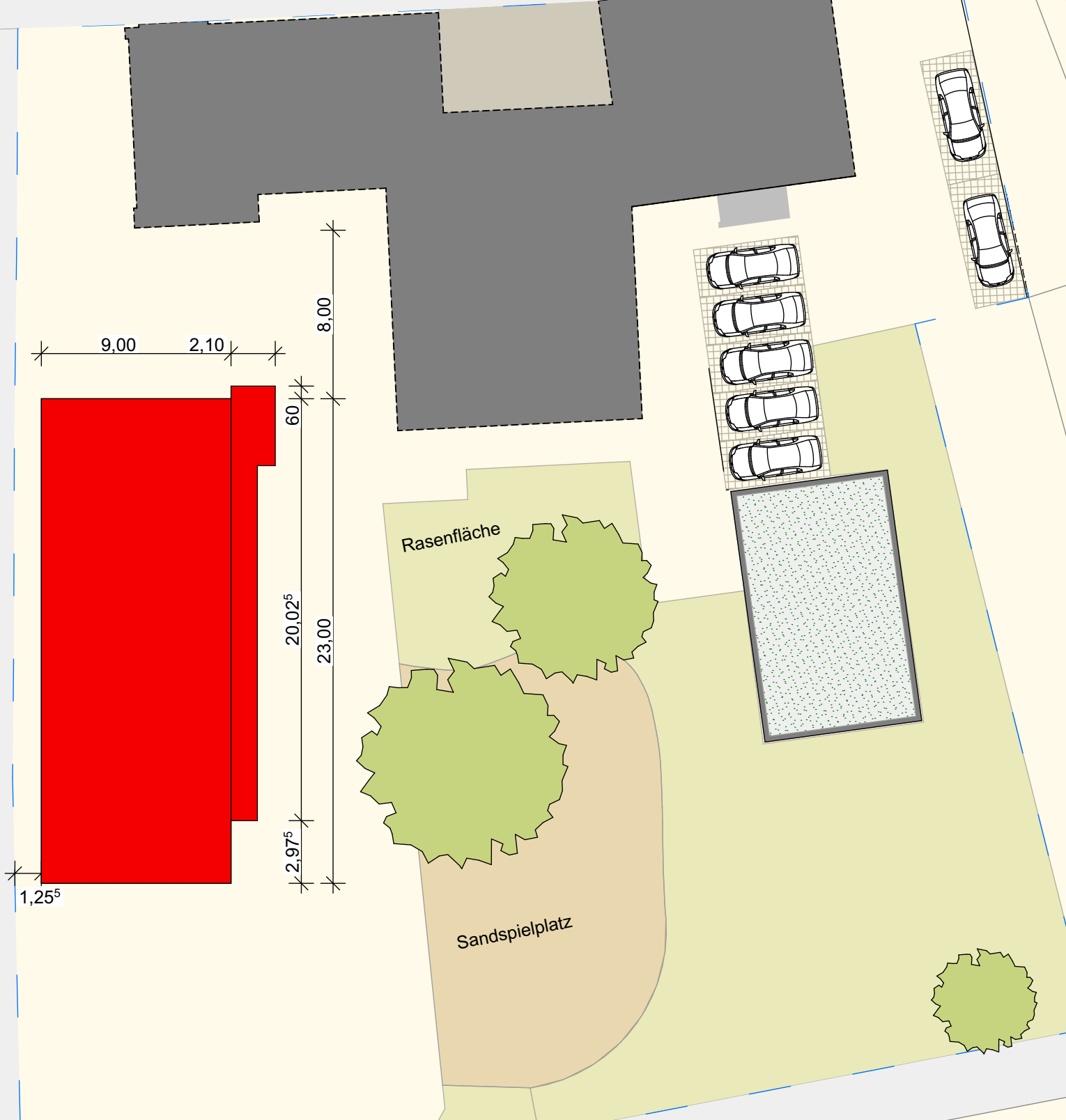




Ansichten

Datum: 22.07.2021 Maßstab: 1:200

Hüttenberger Straße



Freiflächenplan

Datum: 22.07.2021 Maßstab: 1:250