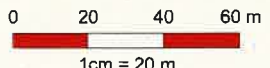


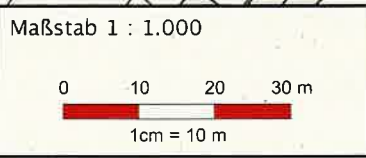
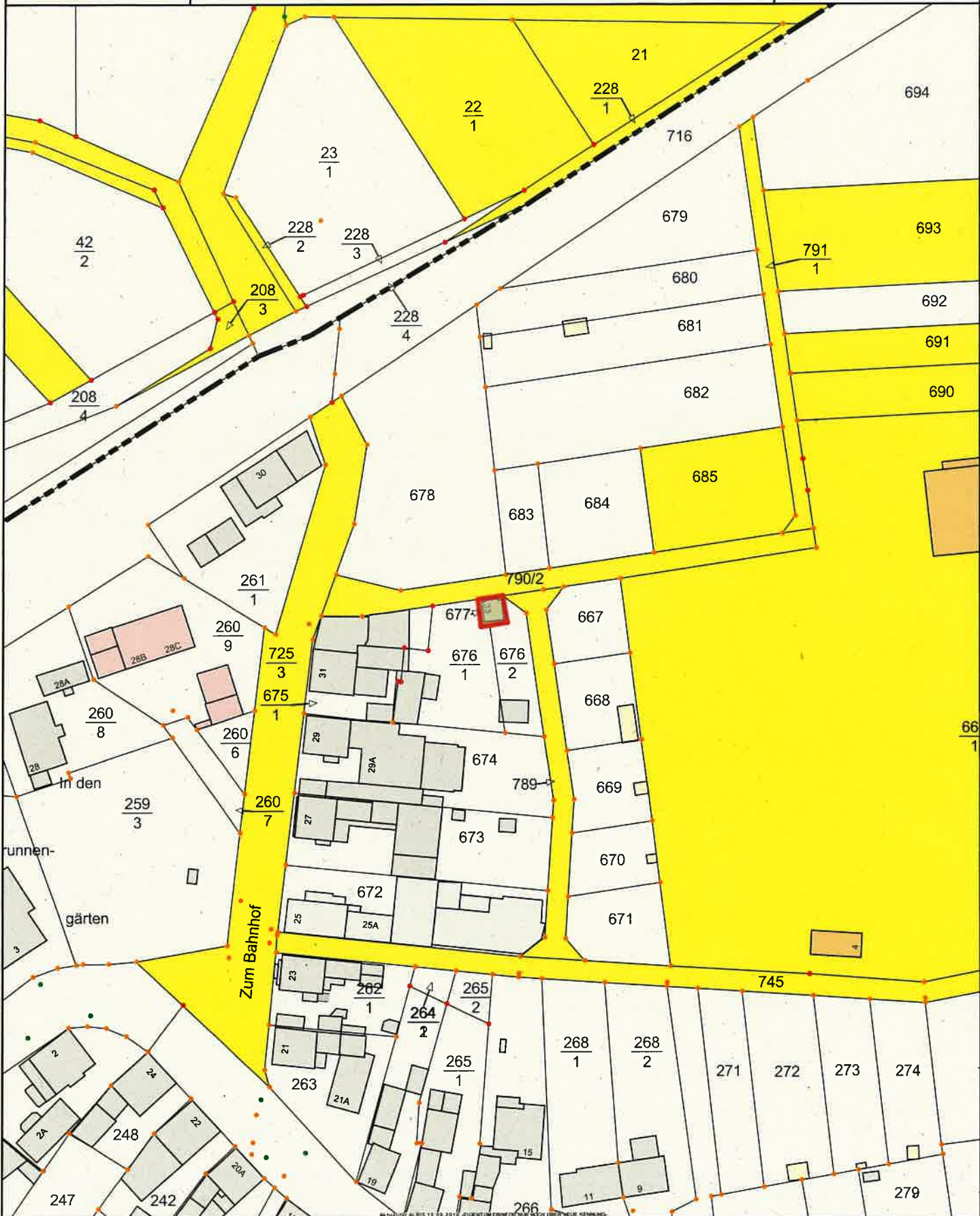


AKTUALISIERUNG 15.03.2019 - EIGENTUMSSTANDSBEWERTUNG NACH ÜBERNEHMUNG

Maßstab 1 : 2.000

Gemarkung Lützellinden Flur 6 Nr. 227

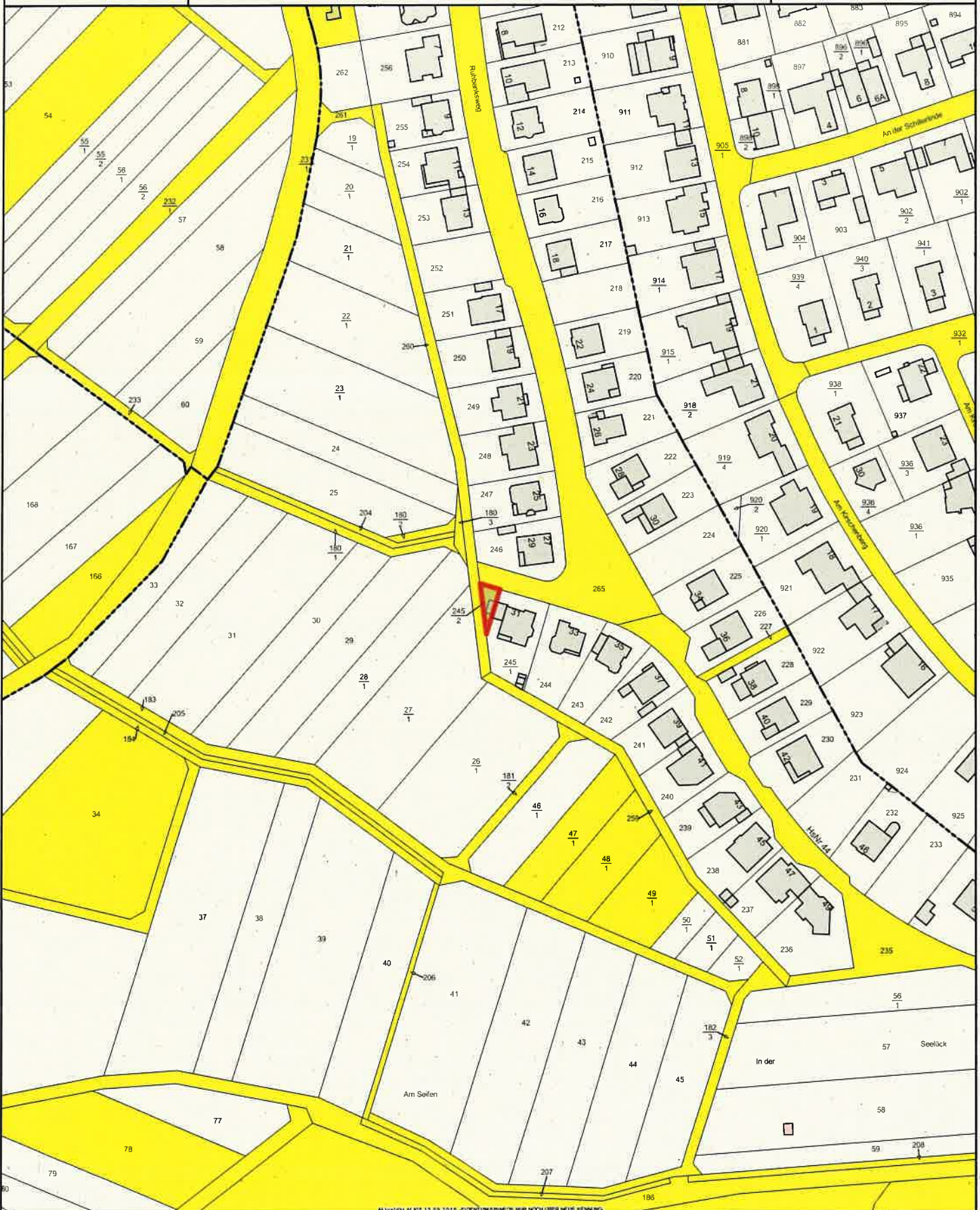




Gemarkung Rödgen Flur 1 Nr. 677

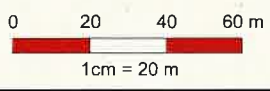






Maßstab 1 : 2.000

Gemarkung Rodgen Flur 5 Nr. 245/2

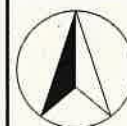
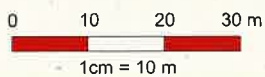


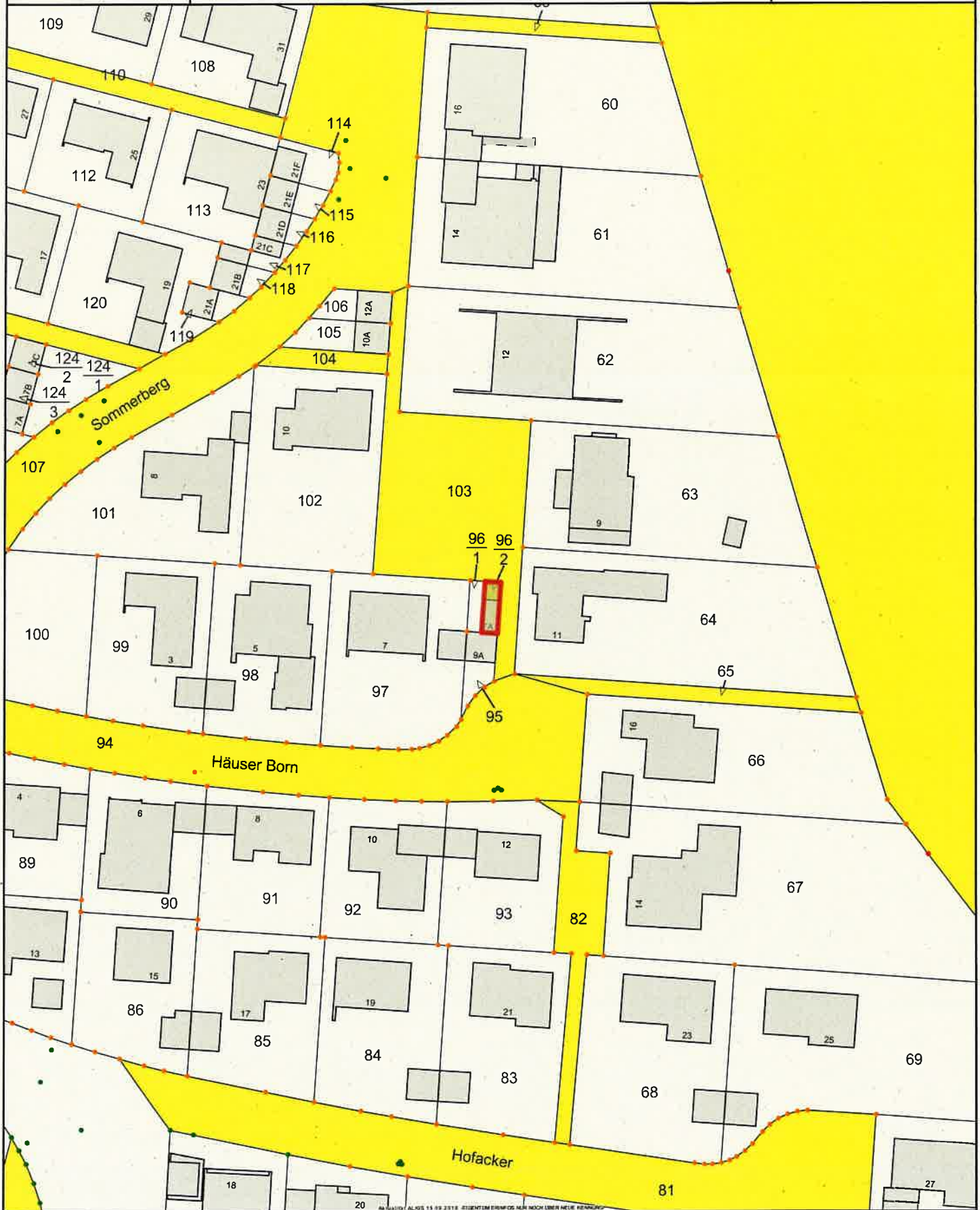




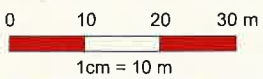
Maßstab 1 : 1.000

Gemarkung Rödgen Flur 6 Nr. 129/8





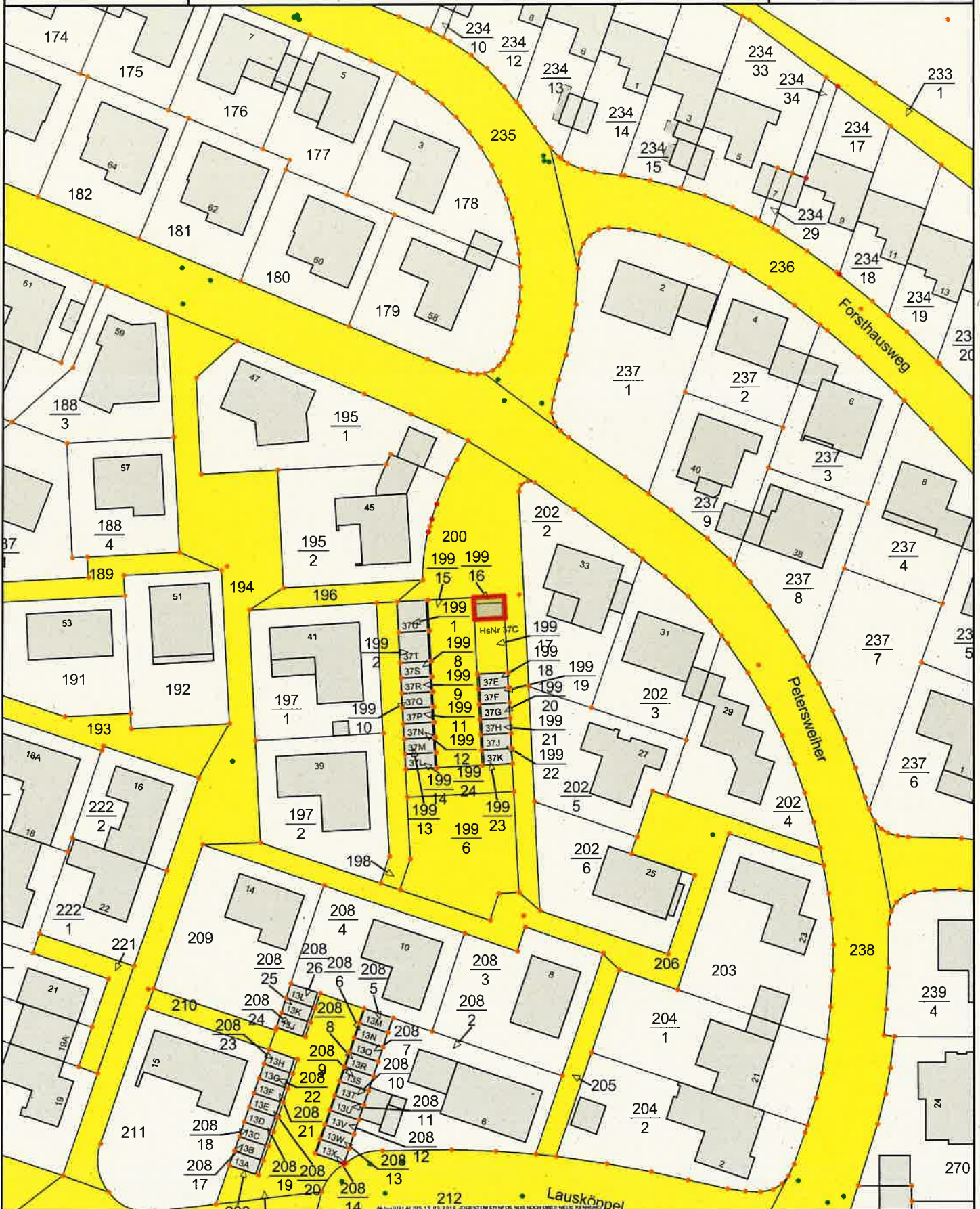
Maßstab 1 : 1.000



Gemarkung Schiffenberg Flur 14 Nr. 96/2

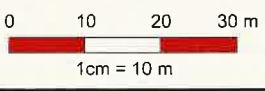




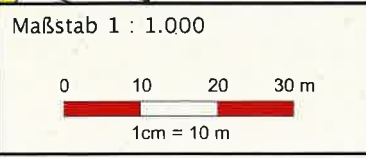
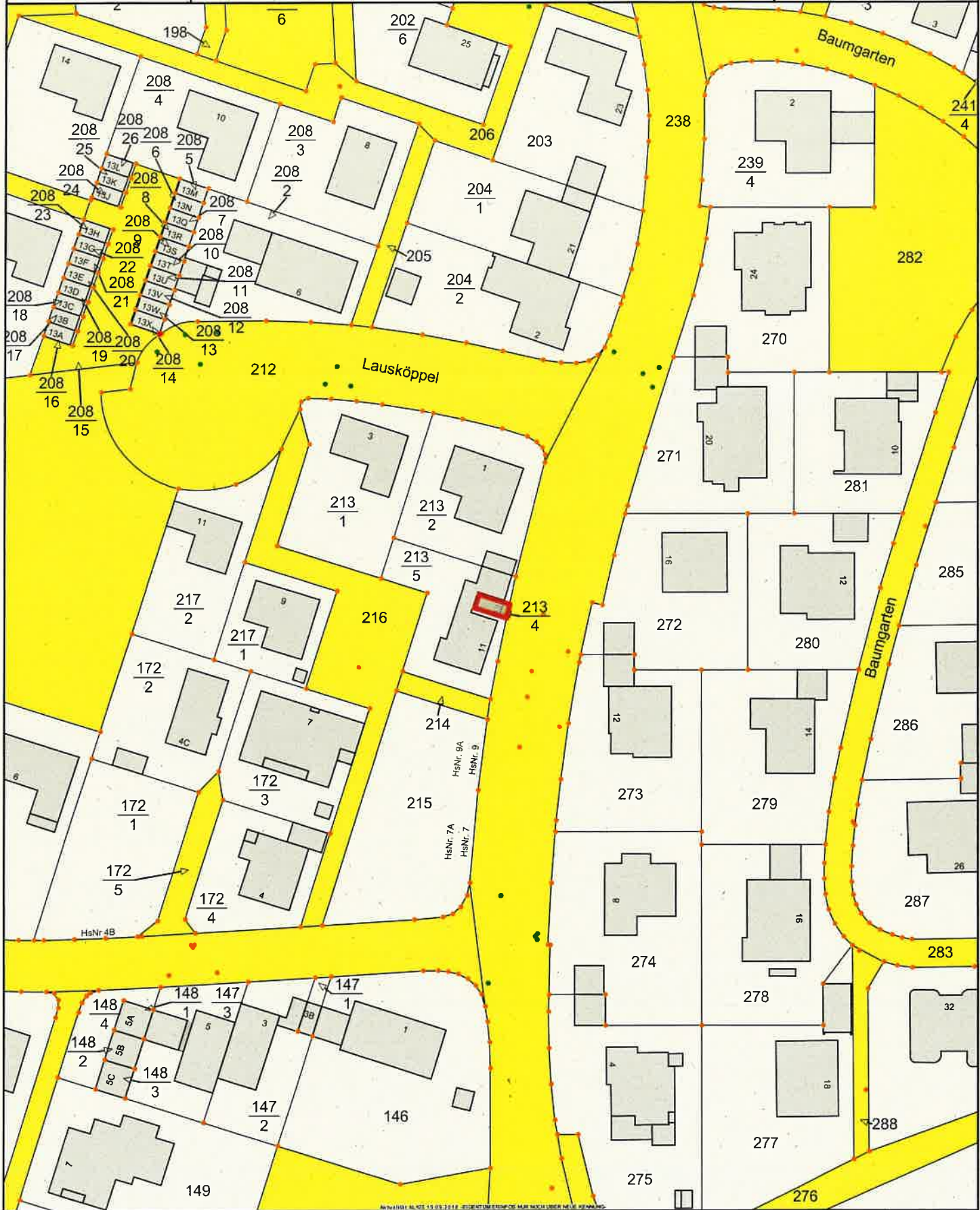


Maßstab 1 : 1.000

Gemarkung Schiffenberg Flur 14 Nr. 199/16

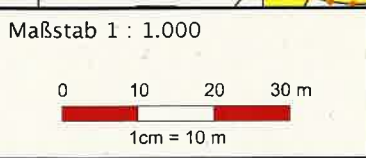
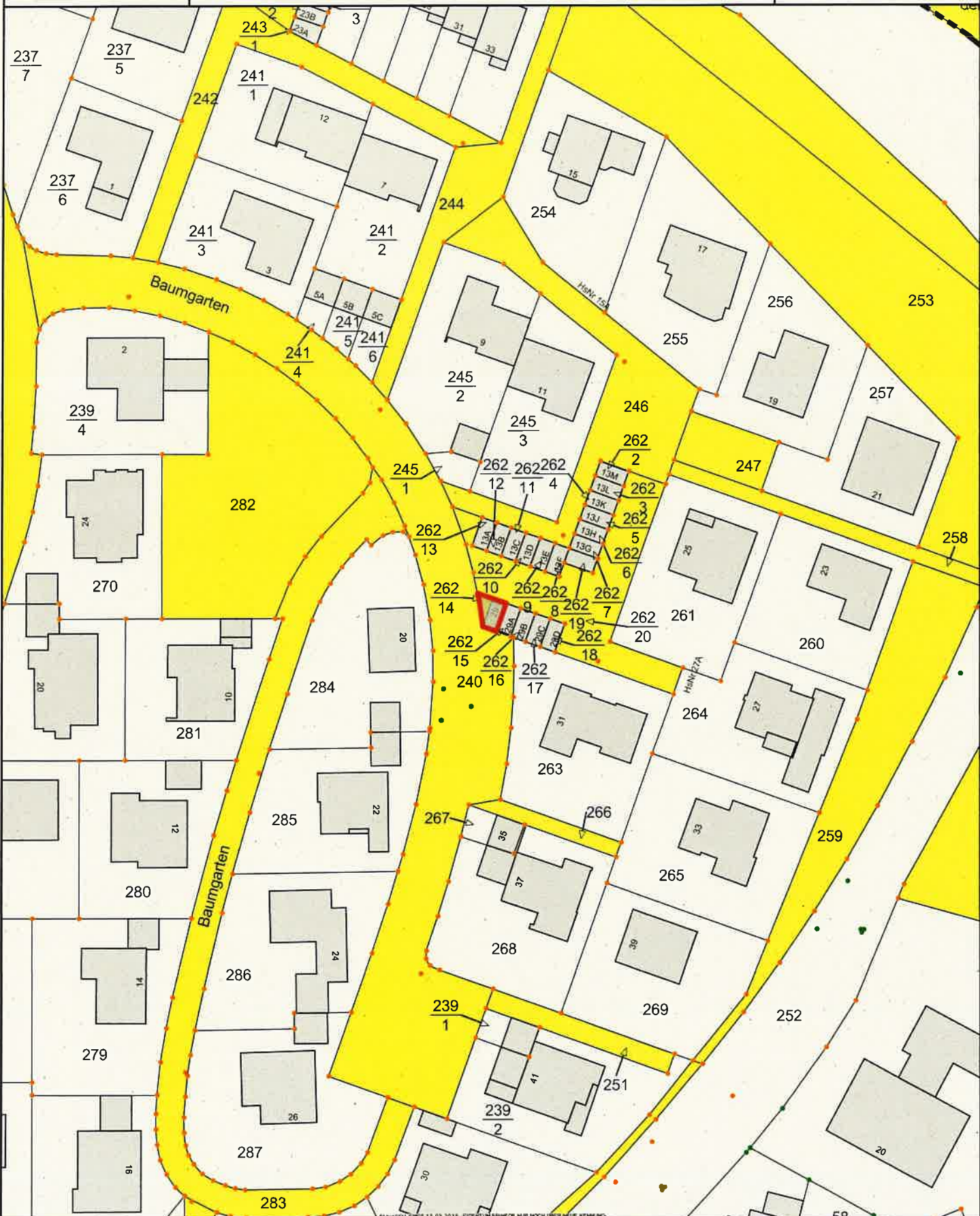






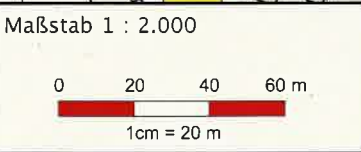
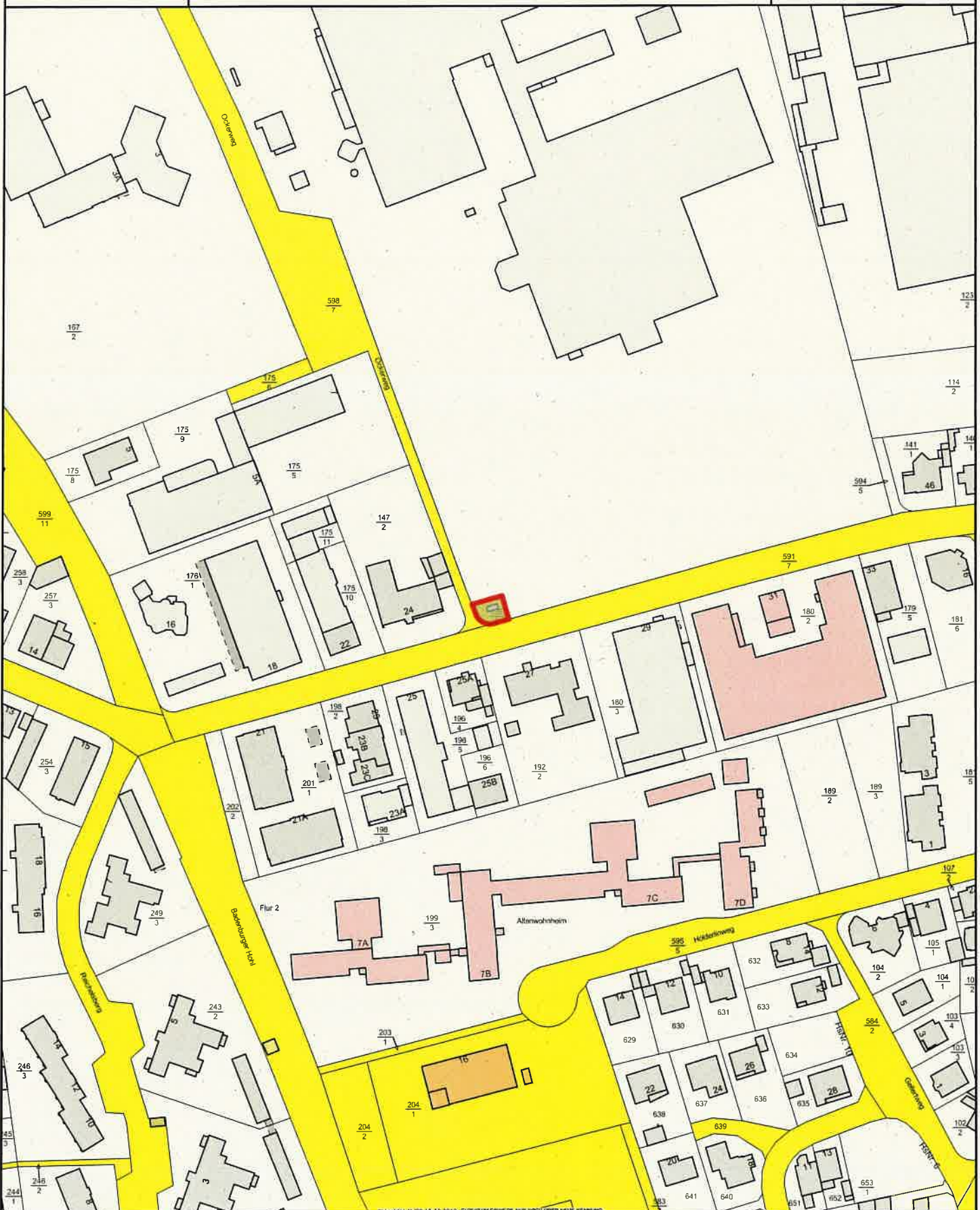
Gemarkung Schiffenberg Flur 14 Nr. 213/4






Gemarkung Schiffenberg Flur 14 Nr. 262/14





Gemarkung Wieseck Flur 2 Nr. 139/5



Alle Flächen ab 1.1.2019 - EIGENTUM ERHÖHUNG NUR NOCH ÜBRIG BLEIBENDE KENNUNG